



FAE

AUTO-ELECTRICAL MANUFACTURERS

TECHNOLOGY AND QUALITY AT CUSTOMER SERVICE



C11



CGM1



CBP5



COX2



CT1



CE1

DISPONIBLE / AVAILABLE
MAYO 2012



FAE – Francisco Albero S.A. – produces a wide range of premium-quality Electrical and Engine management replacement parts since 1952. FAE's products range comprises three thousand references, including temperature and pressure sensors, thermo switches, ignition leads, glow plugs (Termoplus), oxygen sensors, oil pressure and stops light switches, crankshaft sensors and knock and MAP sensors. Decades of experience, permanent pursuit of quality and innovation, besides a strategic location in Barcelona, Spain, have made FAE one the most reliable players in the aftermarket sector, with 75% of its production sold in international markets and presence in 80 countries all over the world.



FRANCISCO ALBERO S.A.

Rafael Barradas, 19
Polig. Gran Via Sud
08908 L'Hospitalet
Barcelona - SPAIN
Tel. 34-93 261 85 00
Fax 34-93 261 84 85
e-mail: fae@fae.es

www.fae.es



THE COMPANY



60 years ago, FAE began repairing electrical spare parts and due to its success and skilled work, a small production of brand-new products was the next phase to follow, to cover the lack of components in the Spanish market back then.

In the course of time, more lines were introduced and they grew with a higher variety of references to be part not only of the local but also of the competitive international sector.

We are proud of our main manufacturing plant of 12 thousand sqm in Barcelona, another one in the Catalonian province of Lleida, our 150 employees and a continuous growth in human resources and technical training that allow FAE to permanently develop new families, to improve our traditional lines and to adapt to our clients demands in quantity, quality and applications.

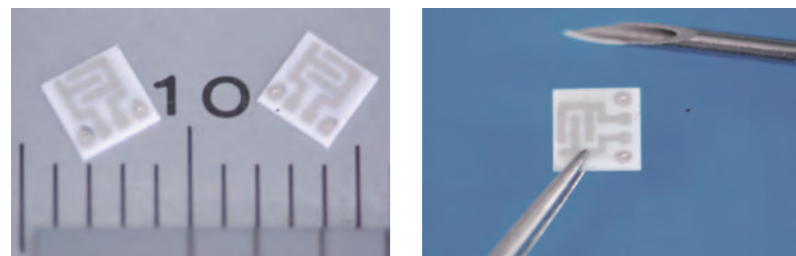
THE FAMILIES

FAE is specialized in manufacturing products that provide information to the central process unit (CPU) of the vehicle, such as oxygen sensors with planar technology and crankshaft, MAP and knock sensors. We also go on investing in our traditional lines that comprehend pressure sensors, thermo switches and ignition leads, among others.

We currently offer three thousand standard references, 1.3 thousand customized articles for specific clients and more than 200 references are released to the market every year.



Worldwide, the control of automotive exhaust gas emissions will be stricter year after year, due to that reality FAE has developed oxygen (λ) sensors and we have chosen the planar multilayer technology -flat ceramics of tiny thickness, piled up on each other in several layers- because they reach the working temperature twice as fast as the traditional ones, therefore significantly reducing the exhaust gas emissions on the cold start of the vehicle. With one single shift FAE has the capacity to manufacture 150 thousand oxygen sensors per year and to multiply that quantity for extra demand by adding more work shifts. Furthermore, we produce 700 thousand units of pressure switches, 1.4 million of temperature contacts for fans and 150 thousand of MAPs and knocks sensors to cover 90% of the variety required in the aftermarket sector, which are tested individually in every phase of production to ensure its premium quality.



THE QUALITY



Every day the raw material received has to pass a first quality inspection, which is decisive for its acceptance and subsequent employ in the production process.

Each piece is marked with a serial number that identifies it for quality control and, before storing it into our warehouse, the finished product receives a bar code and a part number that simplify and optimize the picking, allowing us to have total stock control and helping to best fulfill the customer's orders.

FAE has been, in the aftermarket sector, pioneer in 1995 in obtaining the ISO 9001:1994 Quality certification in Spain; we believe that a proper quality management with special attention to client satisfaction is the only way to consolidate and increase our position in the market.

To continue with our vocation for excellence, we also foresee to certify the ISO TS 16949:2009 in June 2012. TS 16949 is based on ISO 9000 and is applied to the design, development, production and -if it's relevant- installation and operational stages of a new product related to the automotive world.

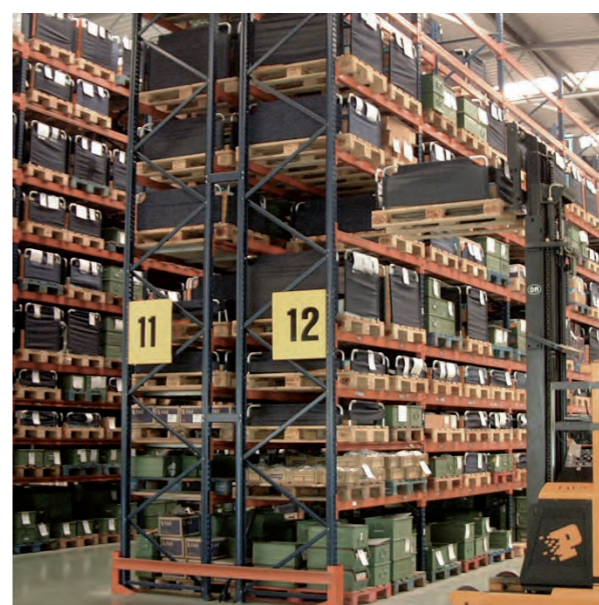


FAE AS OEM



We are also OEM (Original Equipment Manufacturer) to several international brands in the motorbike and heavy-duty vehicle sectors. We supply pieces to Triumph, Suzuki, Piaggio, Nissan, Renault Trucks and John Deere, among others.

FAE ENVIRONMENTAL POLICY



In 2009 FAE achieved the ISO 14001:2004 Quality certification that shows not only our commitment to follow the current legislation regarding the protection of the environment, but also our compromise on continuous improvement and avoidance of any practice leading to contamination.

FAE IN THE WORLD



Since the beginning FAE developed a clear export philosophy. In 1963 we participated for the first time in an automotive auto parts exhibition in France, but we were already commercializing our products in the international market.

Since then, we have become a regular exhibitor in the most important international sectorial fairs such as the ones taking place in Dubai, Moscow, Frankfurt, Paris and Las Vegas. We are also present, through our representatives, in the top local fairs of South America and Middle East.

FAE'S ADDED VALUE

FAE not only acquires equipment from the best suppliers in the world, but also has the capacity to build its own machinery for specific requirements in our production lines. Our last revamping allowed us to triple our fabrication capacity, by automating most of the manufacturing and packaging processes.

Our engineering department is in permanent relation with the academic community, by participating in congresses and publishing scientific papers regarding the creation of new hybrid materials based in the development of nanotechnology.

Keeping pace in the competitive aftermarket sector takes not only energy and knowledge but also investment, therefore is important for us to assign 7.8% of our annual turnover to research, development and innovation (R+D+i).

Every step we take it's synchronized with the pursuit of excellence at a reasonable price.

